

A photograph of a grand, ornate living room. The room features a large, dark wood fireplace with a decorative mantel and a large, arched mirror above it. A chandelier hangs from the ceiling. A bay window with light blue curtains is visible on the right. The room is furnished with a dark green sofa, a patterned rug, and a wooden table in the foreground. The walls are light-colored with decorative paneling.

Castles

ASKING PRICE

£2,000,000

Park Avenue North

London, N8 7RU

Castles

## PROPERTY SUMMARY

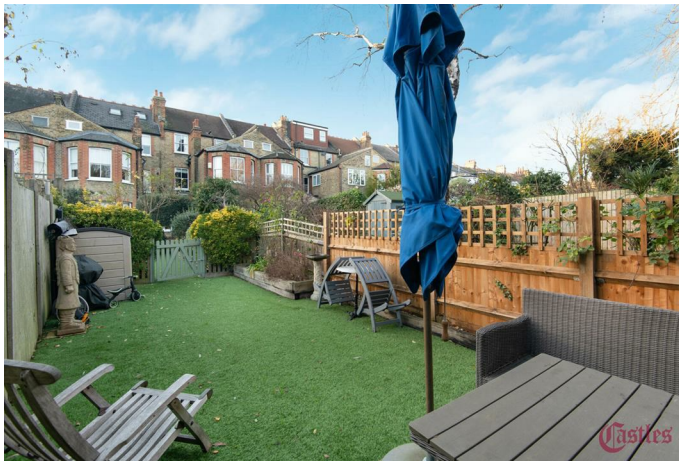
An imposing five-bedroom period family home set on a highly sought-after, tree-lined avenue leading directly to Alexandra Park. Arranged over four floors and extending to approximately 2,785 sq ft / 258.6 sq m, this substantial property offers generously proportioned rooms throughout.

The home further benefits from additional lower ground floor access, providing the potential for a self-contained studio area complete with kitchen/utility space and a shower room—ideal for extended family or guests.

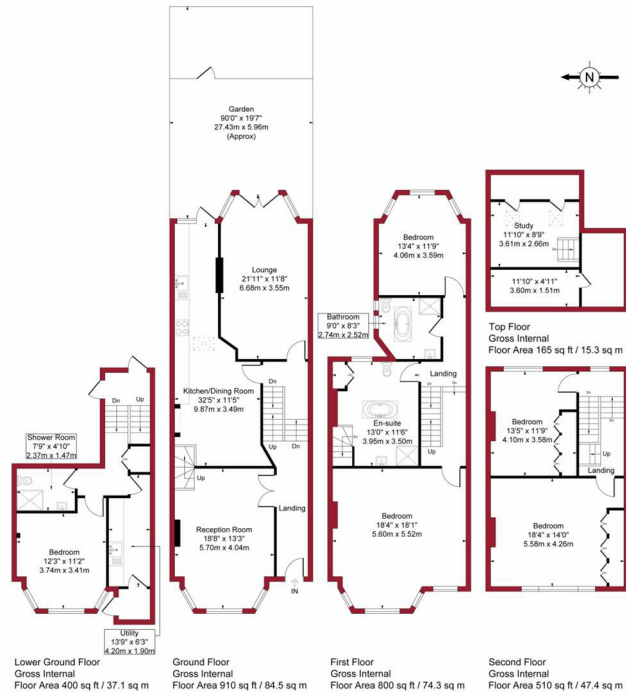
Accommodation comprises a front reception room, a spacious rear kitchen/diner with adjoining lounge, a family bathroom on the first floor, an ensuite to the principal bedroom, a study, and a delightful rear garden.

Ideally positioned between the open green spaces of both Priory Park and Alexandra Park, this exceptional home offers a perfect balance of period character, flexible living space, and an enviable location.





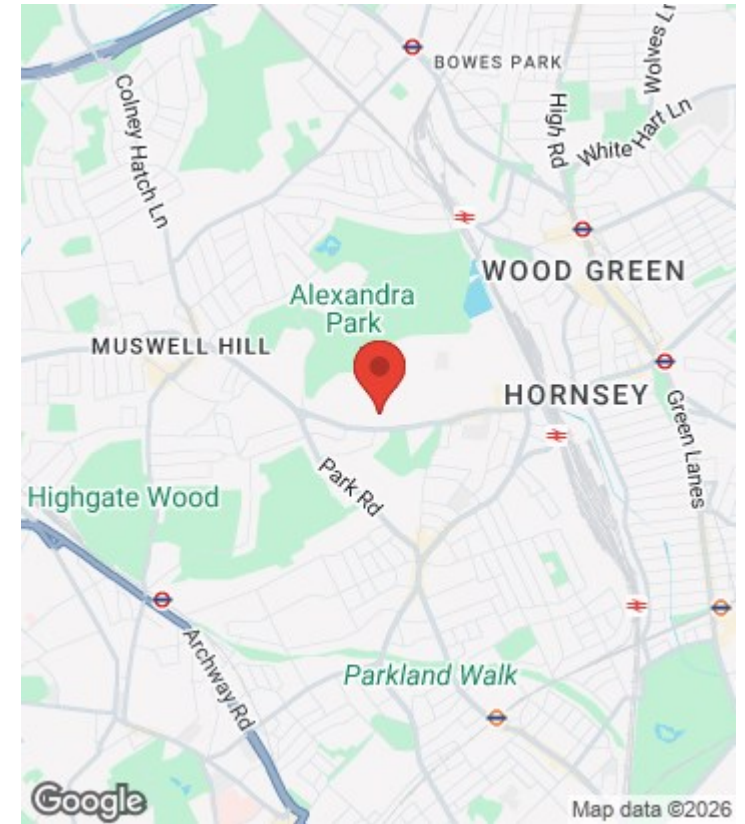
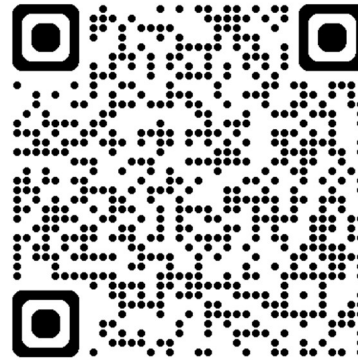
Park Avenue North, London, N8 Approximate Gross Internal Area = 2785 sq ft / 258.6 sq m



Floor plan produced in accordance with RICS Property Measurement 2nd Edition. Although Pink Plan Ltd ensures the highest level of accuracy, measurements of doors, windows and rooms are approximate and no responsibility is taken for error, omission or misstatement. These plans are for representation purposes only and no guarantee is given on the total square footage of the property within this plan. The figure icon is for initial guidance only and should not be relied on as a basis of valuation.



For a guide to the area please scan this code for more information



House - Terraced

Freehold

**Council:** Haringey

**Council Tax Band:** G

Agents Note: Whilst every care has been taken to prepare these particulars, they are for guidance purposes only. All measurements are approximate and are for general guidance purposes only and whilst every care has been taken to ensure their accuracy, they should not be relied upon and potential buyers/tenants are advised to recheck the measurements



**OFFICE ADDRESS**

12 Topsfield Parade  
Crouch End  
London  
N8 8PR

**OFFICE DETAILS**

020 8348 5515  
crouchend@castles.london  
<https://www.castles.london>

