

Castles



OFFERS IN EXCESS OF

£189,950

Barrowfield Close

London, N9 0HA

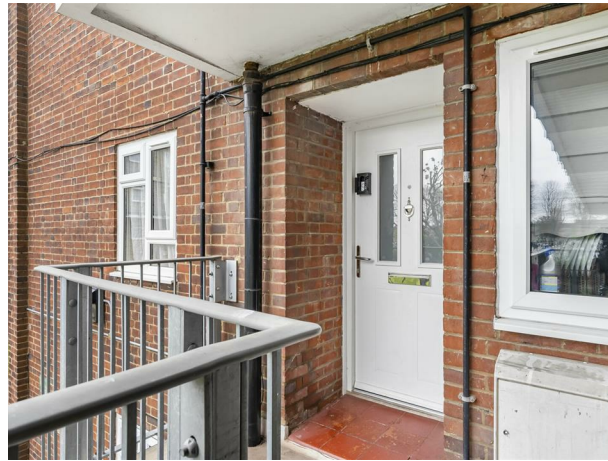
PROPERTY SUMMARY

Castles are delighted to present this well maintained second floor one bedroom flat with a half a mile of Edmonton Green shopping Centre and walking distance to the BR train station. The property benefits from a three piece bathroom suite, modern kitchen and bedroom, gas central heating, outside storage shed and is offered on a chain free basis.

Lease: 82 years

Ground Rent: £5.00 Yearly

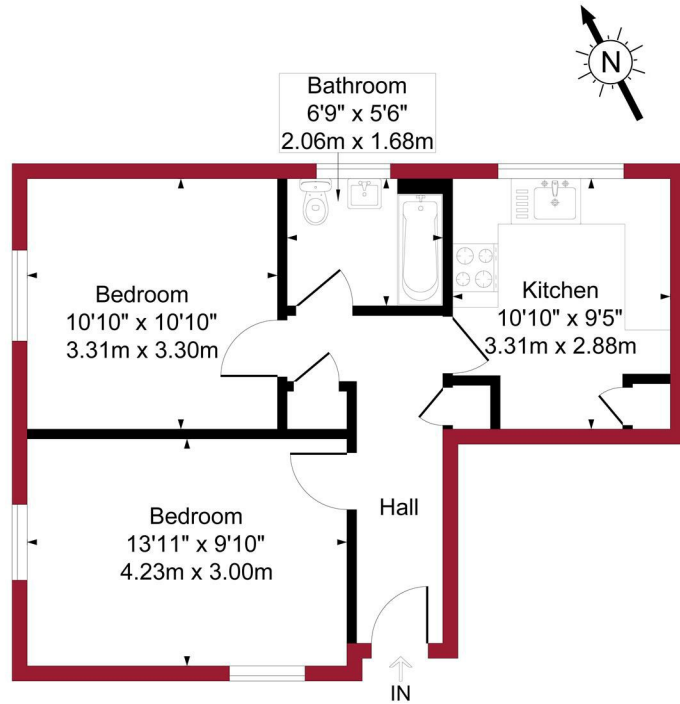
Service charge: £141.00 Monthly





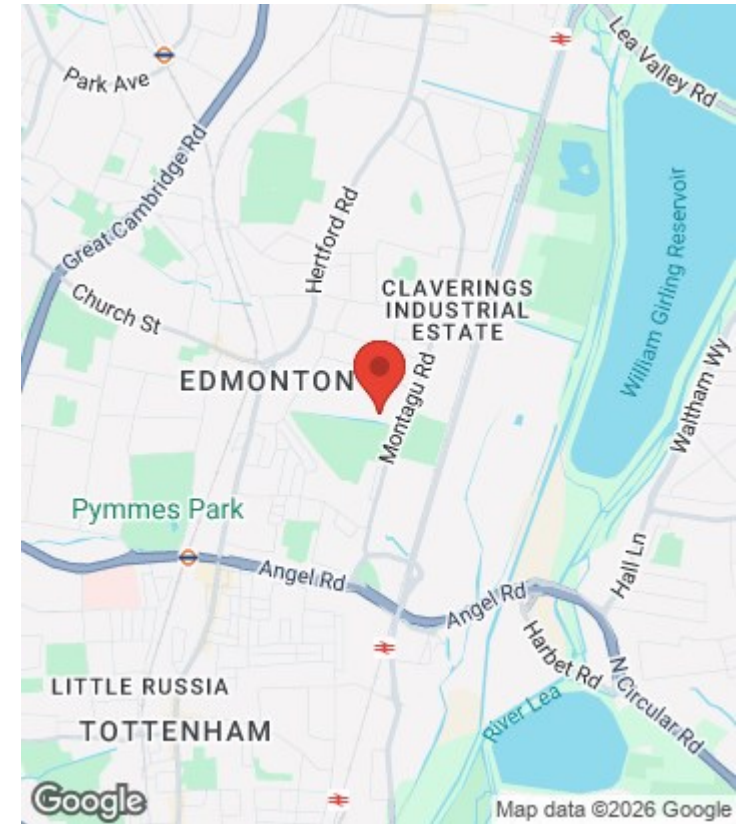
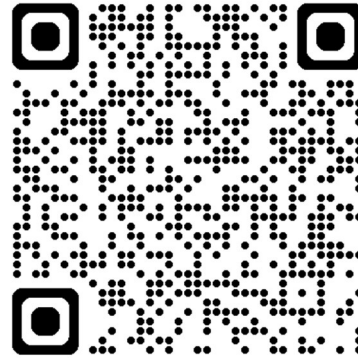
Barrowfield Close, London, N9

Approximate Gross Internal Area = 484 sq ft / 45.0 sq m



First Floor

For a guide to the area please scan this code for more information



Flat

Leasehold

Council: Enfield

Council Tax Band: B

Agents Note: Whilst every care has been taken to prepare these particulars, they are for guidance purposes only. All measurements are approximate and are for general guidance purposes only and whilst every care has been taken to ensure their accuracy, they should not be relied upon and potential buyers/tenants are advised to recheck the measurements



OFFICE ADDRESS

438 Hertford Road
Edmonton
London
N9 8AB

OFFICE DETAILS

020 8804 8123
edmonton@castles.london
<https://www.castles.london/>

Energy Efficiency Rating		Current	Potential
Very energy efficient - lower running costs			
92-100	A		
81-91	B		
69-80	C	73	77
55-68	D		
39-54	E		
21-38	F		
1-20	G		
Not energy efficient - higher running costs			
England & Wales		EU Directive 2002/91/EC	