

Castles

OFFERS IN EXCESS OF  
**£425,000**  
**Lopen Road**  
London, N18 1PX

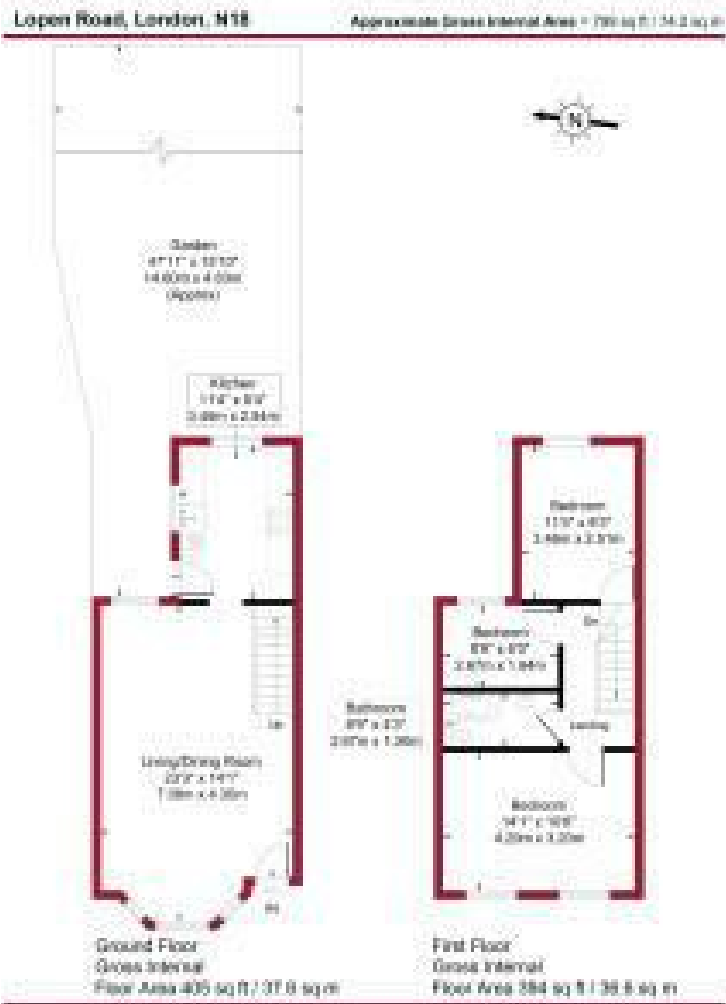
## PROPERTY SUMMARY

A three bedroom Victorian Terraced property situated within 1/2 mile of Silver Street BR Station and A406/A10 Road links. The property comprises of Reception and kitchen to ground floor with a further Three bedrooms and bathroom to first floor, It also has features to include, 47ft rear garden, gas central heating, double glazing and is offered for sale on a chain free basis.

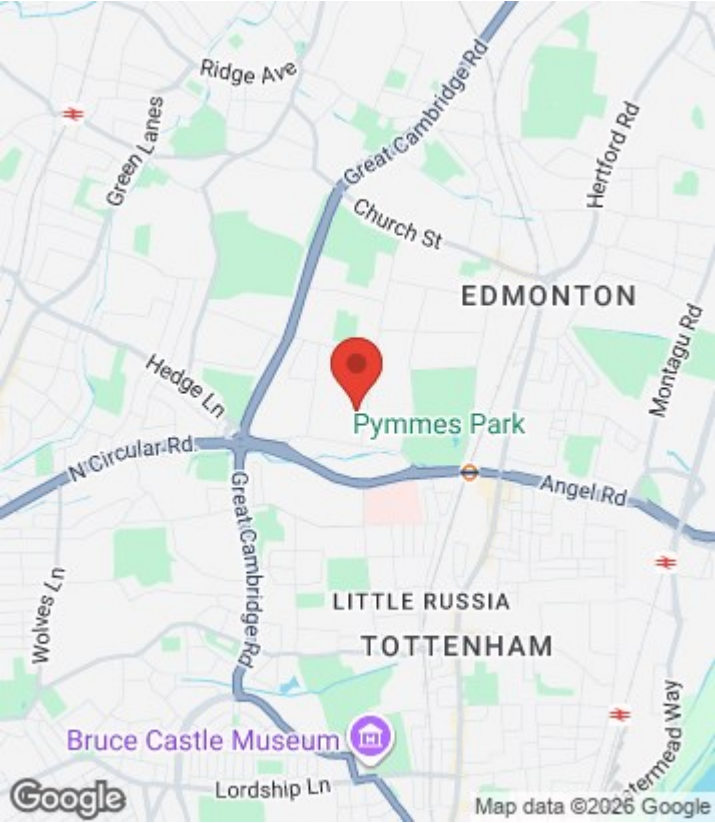


3 1 1 D





For a guide to the area please scan this code for more information



House - Terraced  
 Freehold  
**Council:**  
**Council Tax Band: C**

Agents Note: Whilst every care has been taken to prepare these particulars, they are for guidance purposes only. All measurements are approximate and are for general guidance purposes only and whilst every care has been taken to ensure their accuracy, they should not be relied upon and potential buyers/tenants are advised to recheck the measurements



**OFFICE ADDRESS**  
 438 Hertford Road  
 Edmonton  
 London  
 N9 8AB

**OFFICE DETAILS**  
 020 8804 8123  
 edmonton@castles.london  
<https://www.castles.london/>

