



# Castles

OFFERS IN EXCESS OF

**£384,950**

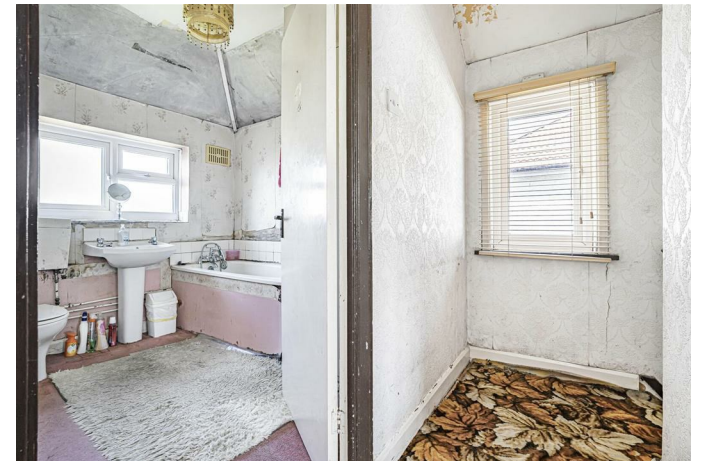
**Byron Terrace**

London, N9 7DG

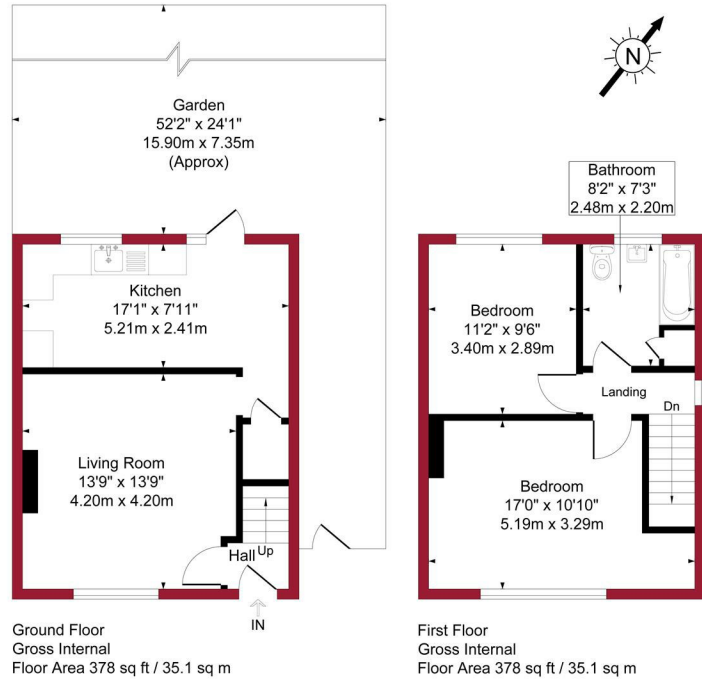
## PROPERTY SUMMARY

Castles are delighted to offer this two bedroom Semi-Detached house with further potential for extensions subject to planning and potential for drive way. The property benefits from lounge, kitchen to ground floor with a further two bedrooms and bathroom to first floor, it also has features to include double glazed windows, gas central heating and the property is offered for sale on a chain free basis. Internal viewings highly recommended.

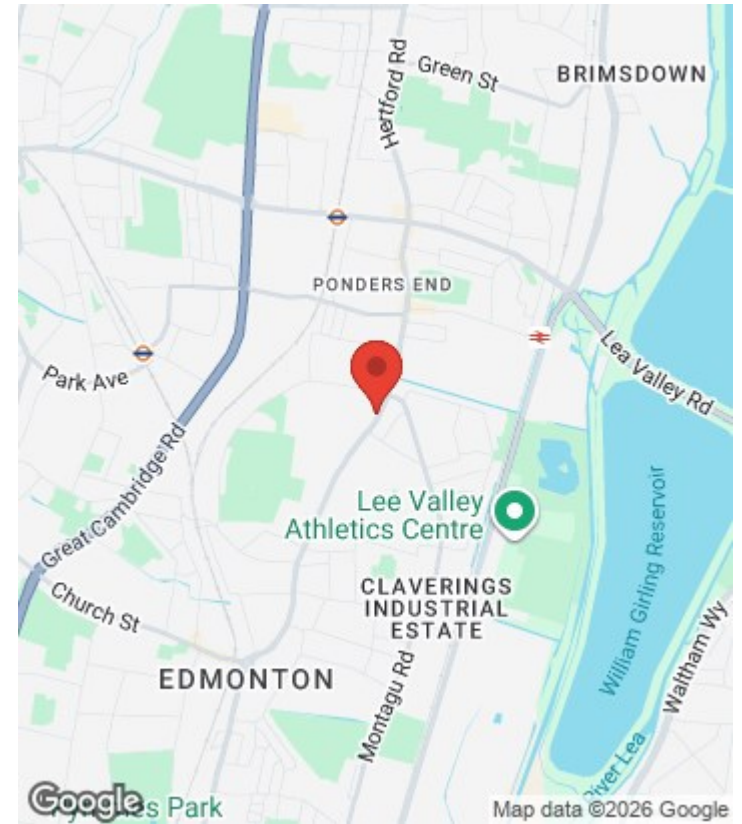
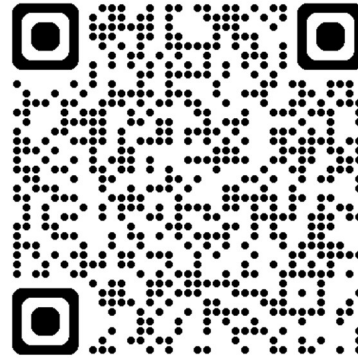




Byron Terrace ,Hertford Road ,London ,N7      Approximate Gross Internal Area = 756 sq ft / 70.2 sq m



For a guide to the area please scan this code for more information



House  
Freehold  
**Council:** Enfield  
**Council Tax Band:** D

Agents Note: Whilst every care has been taken to prepare these particulars, they are for guidance purposes only. All measurements are approximate and are for general guidance purposes only and whilst every care has been taken to ensure their accuracy, they should not be relied upon and potential buyers/tenants are advised to recheck the measurements



**OFFICE ADDRESS**

438 Hertford Road  
Edmonton  
London  
N9 8AB

**OFFICE DETAILS**

020 8804 8123  
edmonton@castles.london  
<https://www.castles.london/>

