

Castles



ASKING PRICE

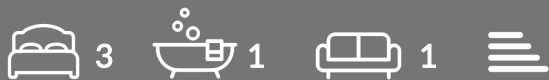
£480,000

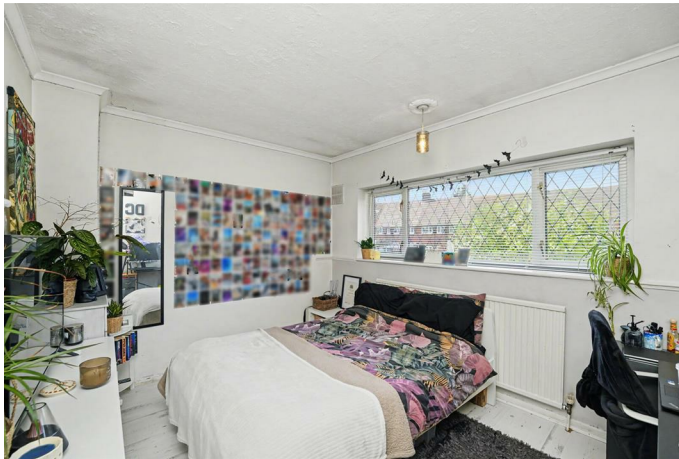
Bowles Green

Enfield, EN1 4SU

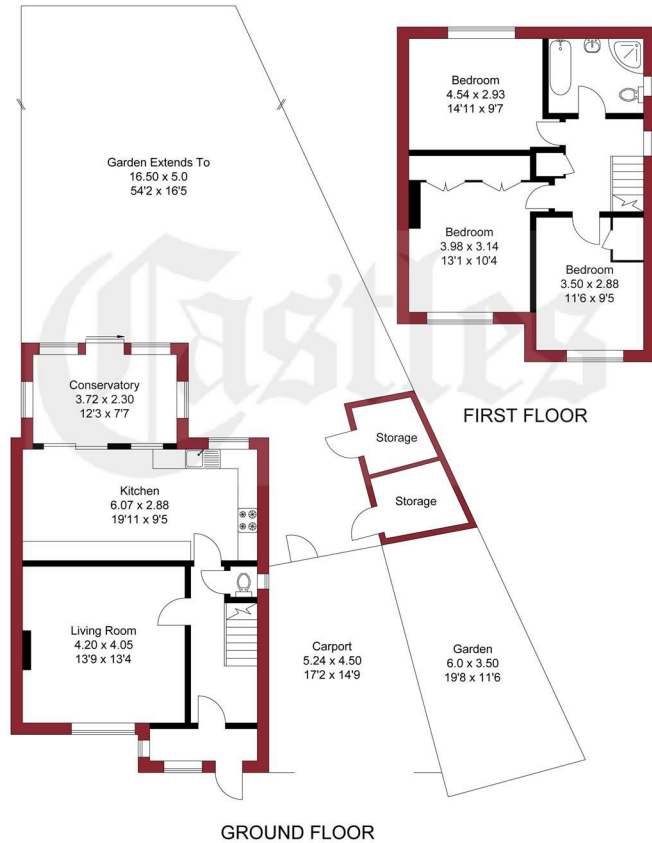
PROPERTY SUMMARY

A spacious 3 double bedroom end of terraced family house located off Turkey Street, West of the A10, within approx 0.4 miles of Turkey Street British Rail Station (Serving London Liverpool St.) and close to local parks and popular school catchment areas. The property is offered for sale chain free and offers extension potential (stpp). Viewing is highly recommended. Features include: front off street parking for 2 cars, car port to side, separate living room, double glazing, 19' fitted kitchen diner, conservatory, rear garden, first floor bathroom, extension potential, Gas central heating and Ground floor WC



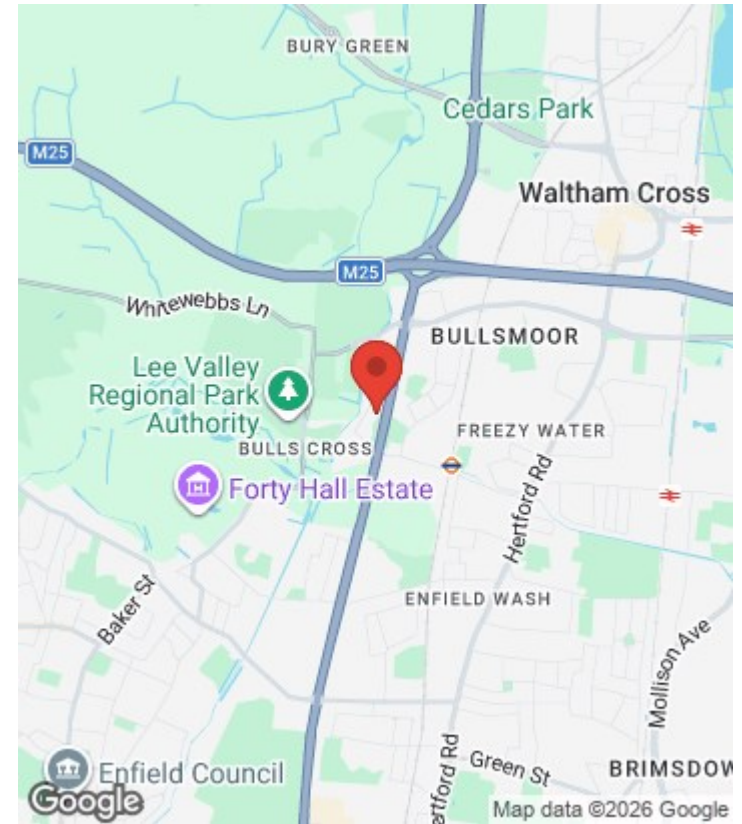


APPROXIMATE GROSS INTERNAL AREA
100.55 sqm / 1082.31 sqft (Excluding Storage)



THIS PLAN IS FOR ILLUSTRATION ONLY AND MAY NOT BE REPRESENTATIVE OF THE PROPERTY

For a guide to the area please scan this code for more information



House - End Terrace

Freehold

Council: ENFIELD

Council Tax Band: D

Agents Note: Whilst every care has been taken to prepare these particulars, they are for guidance purposes only. All measurements are approximate and are for general guidance purposes only and whilst every care has been taken to ensure their accuracy, they should not be relied upon and potential buyers/tenants are advised to recheck the measurements



OFFICE ADDRESS

243 - 245 Hertford Road
Enfield
London
EN3 5JJ

OFFICE DETAILS

0208 804 8000
enfield@castles.london
<https://www.castles.london>

Energy Efficiency Rating		Current	Potential
Very energy efficient - lower running costs			
(92-100) A			
(81-91) B			
(69-80) C			
(55-68) D			
(39-54) E			
(21-38) F			
(1-20) G			
Not energy efficient - higher running costs			
England & Wales		EU Directive 2002/91/EC	