

Castles



£240,000
Pentland Close
London, N9 0XN

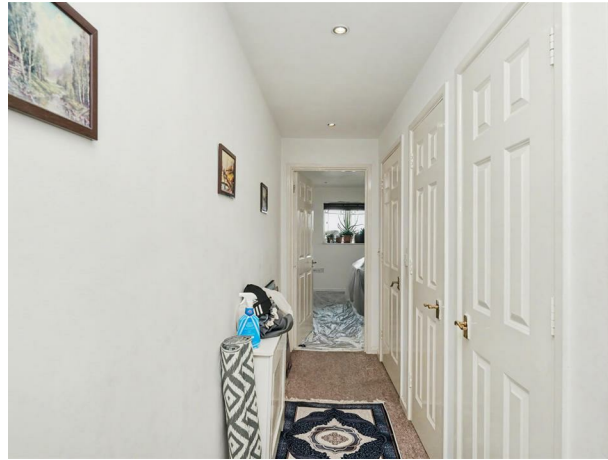
PROPERTY SUMMARY

Castles are delighted to present this Two bedroom Top floor flat with a 99 year lease remaining. The property benefits from a lounge, kitchen, bathroom and two bedrooms, it also has features to include double glazed window, loft space and is offered for sale on a chain free basis

99 Year lease

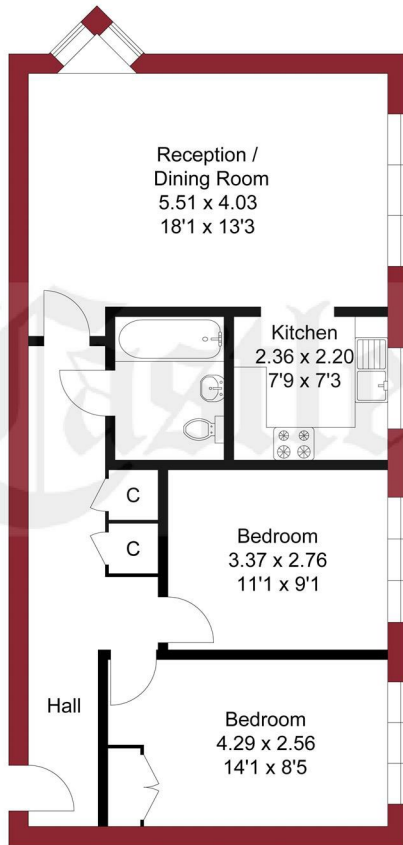
Service charge: £2,200.00 PA

Ground Rent: £150.00 PA





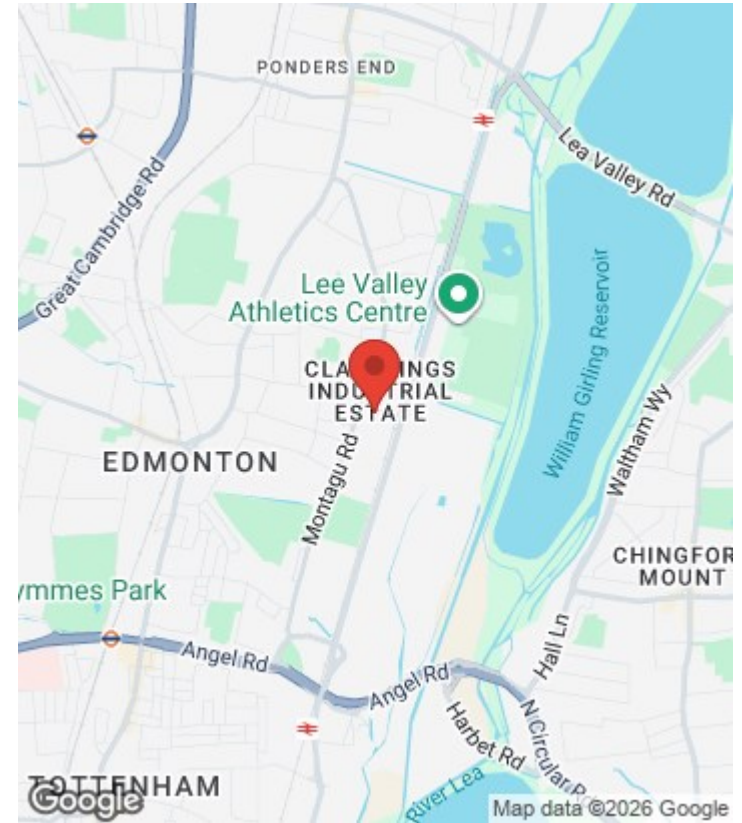
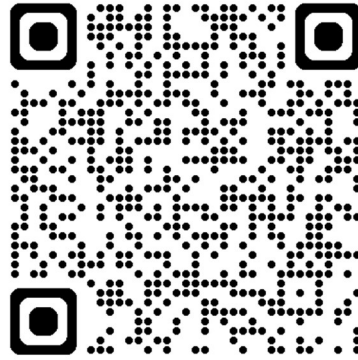
APPROXIMATE GROSS INTERNAL AREA
64.02 sqm / 689.10 sqft



SECOND FLOOR

THIS PLAN IS FOR ILLUSTRATION ONLY AND MAY NOT BE REPRESENTATIVE OF THE PROPERTY

For a guide to the area please scan this code for more information



Flat

Leasehold

Council:

Council Tax Band: C

Agents Note: Whilst every care has been taken to prepare these particulars, they are for guidance purposes only. All measurements are approximate and are for general guidance purposes only and whilst every care has been taken to ensure their accuracy, they should not be relied upon and potential buyers/tenants are advised to recheck the measurements



OFFICE ADDRESS

438 Hertford Road
Edmonton
London
N9 8AB

OFFICE DETAILS

020 8804 8123
edmonton@castles.london
<https://www.castles.london/>

