



Castles

OFFERS IN EXCESS OF

£459,950

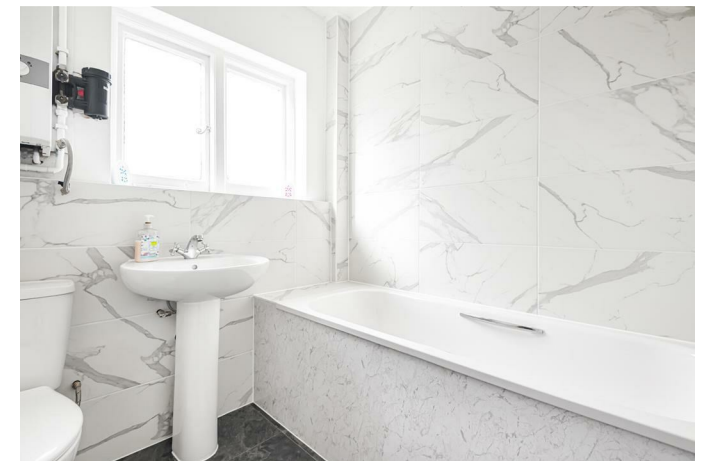
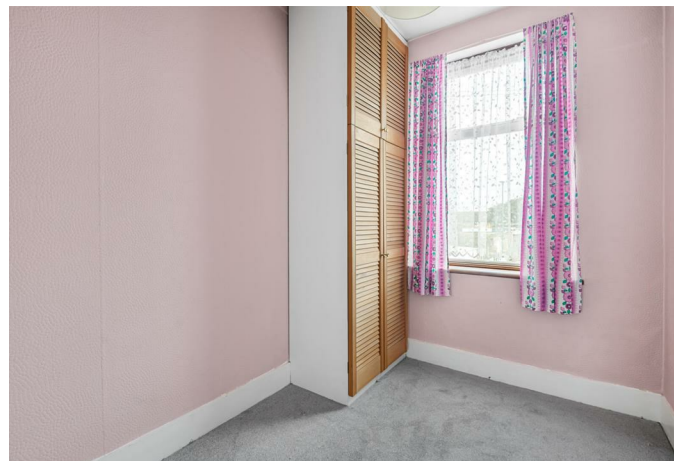
Middlesborough Road

London, N18 2AR

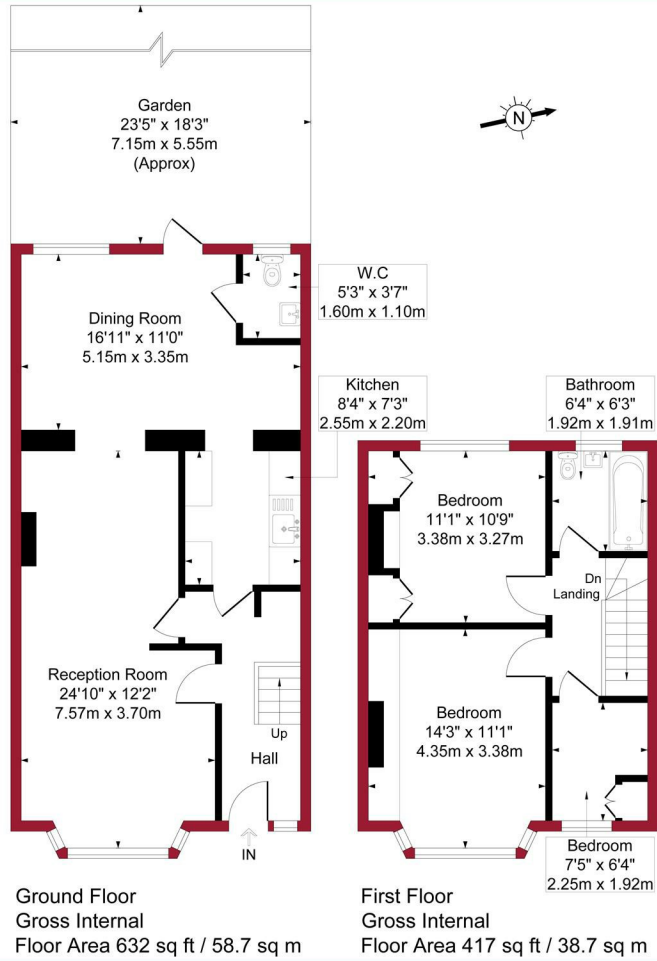
PROPERTY SUMMARY

A three bedroom 1930's extended property situated within 1/4 mile of Fore Street with its shops and Transport links. The property has Reception, kitchen and WC to ground floor with a further three bedrooms and bathroom to first floor. It also has features to include., 25ft rear garden, gas central heating and is offered for sale on a chain free basis.

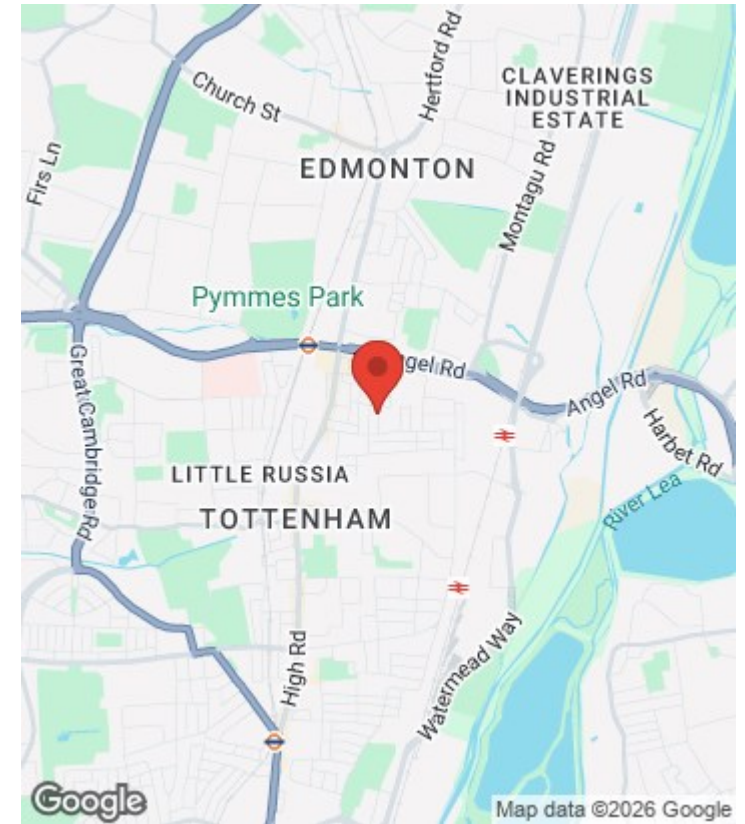
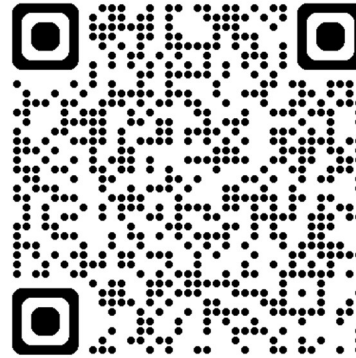




Middlesborough Road, London, N18 Approximate Gross Internal Area = 1049 sq ft / 97.4 sq m



For a guide to the area please scan this code for more information



House
Freehold
Council:
Council Tax Band: C

Agents Note: Whilst every care has been taken to prepare these particulars, they are for guidance purposes only. All measurements are approximate and are for general guidance purposes only and whilst every care has been taken to ensure their accuracy, they should not be relied upon and potential buyers/tenants are advised to recheck the measurements



OFFICE ADDRESS

438 Hertford Road
Edmonton
London
N9 8AB

OFFICE DETAILS

020 8804 8123
edmonton@castles.london
<https://www.castles.london/>

