



Castles

ASKING PRICE

£465,000

Grove Gardens

Enfield, EN3 5PG Freehold

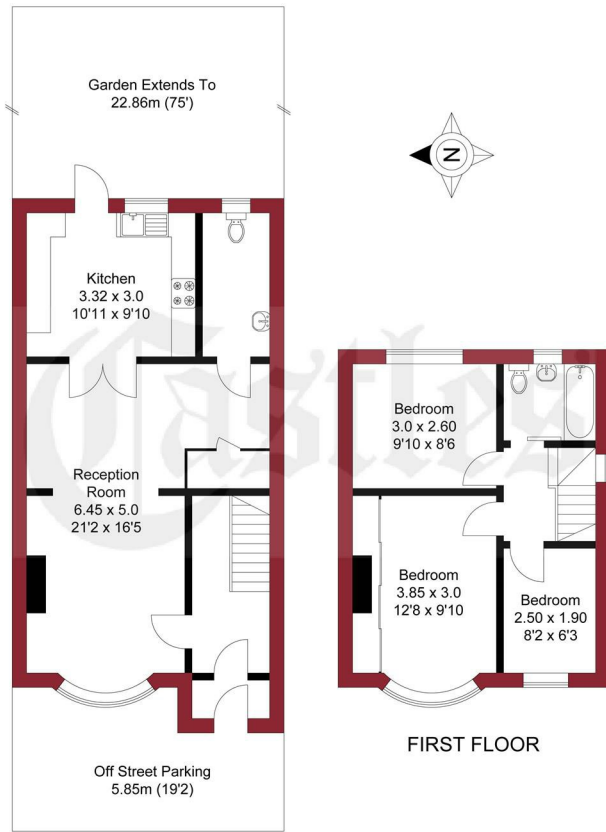
PROPERTY SUMMARY

An extended bay fronted 3 bedroom semi-detached family house located in a quiet no through road off Eastfield Road, close to local schools and Albany Park and less than 0.5m to Brimsdown and Turkey Street Train Stations (serving London Liverpool Street). The property is in good decorative order and would be an ideal family home. Viewing is highly recommended. Features include:-
Front off street parking,
Double glazing,
Gas central heating,
Spacious living room,
Extended Kitchen,
Utility area,
Ground floor WC,
Good size rear garden.



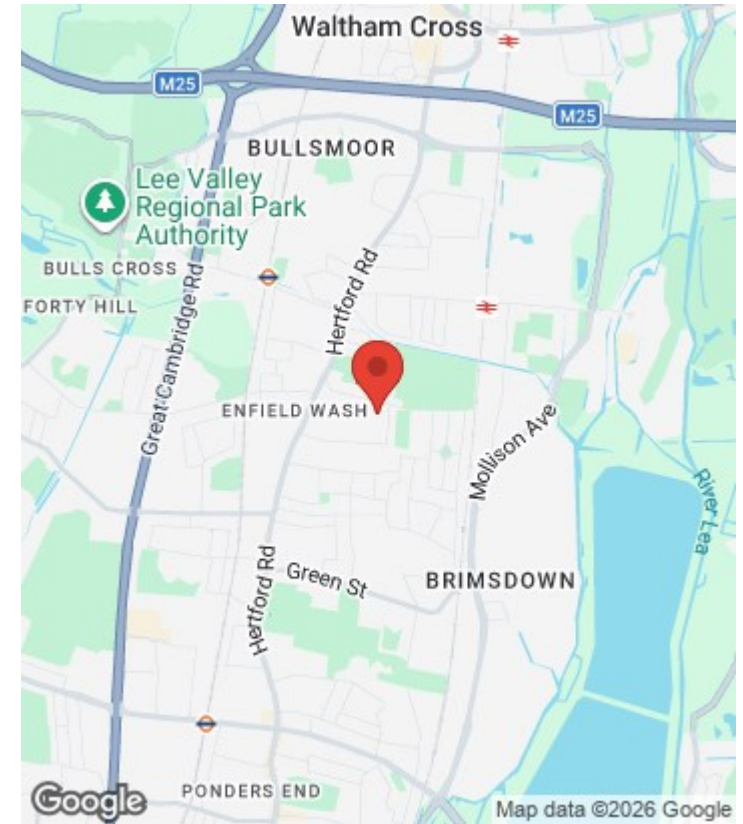


APPROXIMATE GROSS INTERNAL AREA
84.06 sqm / 904.81 sqft



THIS PLAN IS FOR ILLUSTRATION ONLY AND MAY NOT BE REPRESENTATIVE OF THE PROPERTY

For a guide to the area please scan this code for more information



House

Freehold

Council: Enfield

Council Tax Band:

Agents Note: Whilst every care has been taken to prepare these particulars, they are for guidance purposes only. All measurements are approximate and are for general guidance purposes only and whilst every care has been taken to ensure their accuracy, they should not be relied upon and potential buyers/tenants are advised to recheck the measurements



OFFICE ADDRESS

243 - 245 Hertford Road
Enfield
London
EN3 5JJ

OFFICE DETAILS

0208 804 8000
enfield@castles.london
<https://www.castles.london>

