

# Castles



OFFERS IN EXCESS OF

**£399,950**

**Thornaby Gardens**

London, N18 2AU

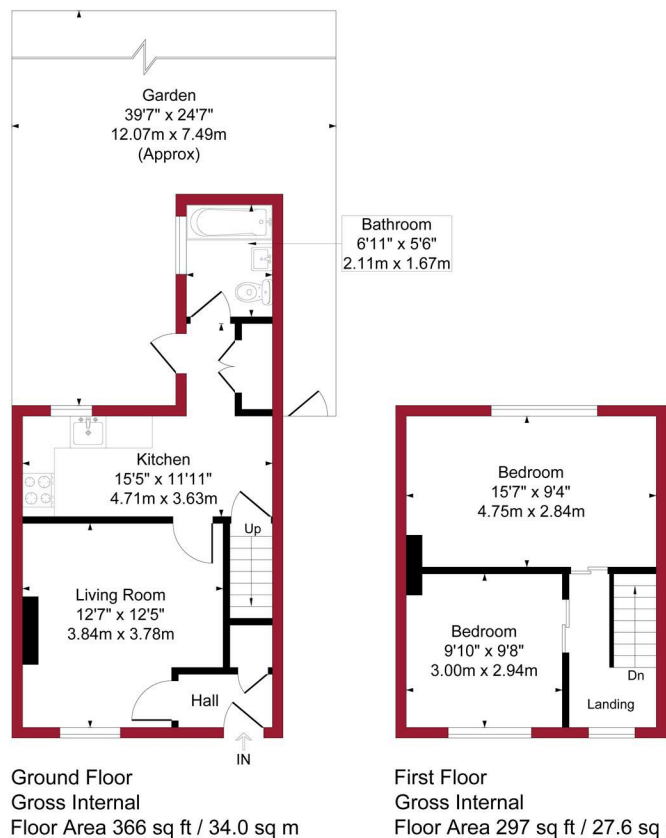
## PROPERTY SUMMARY

A two bedroom extended end of Terraced property situated within 1/2 mile of Fore Street with its shops and transport links. The property comprises of Reception, kitchen, bathroom to ground floor, with a further two double bedrooms to first floor. It also has features to include, off street parking, small side plot, 39ft rear garden and is offered for sale on a chain free basis.

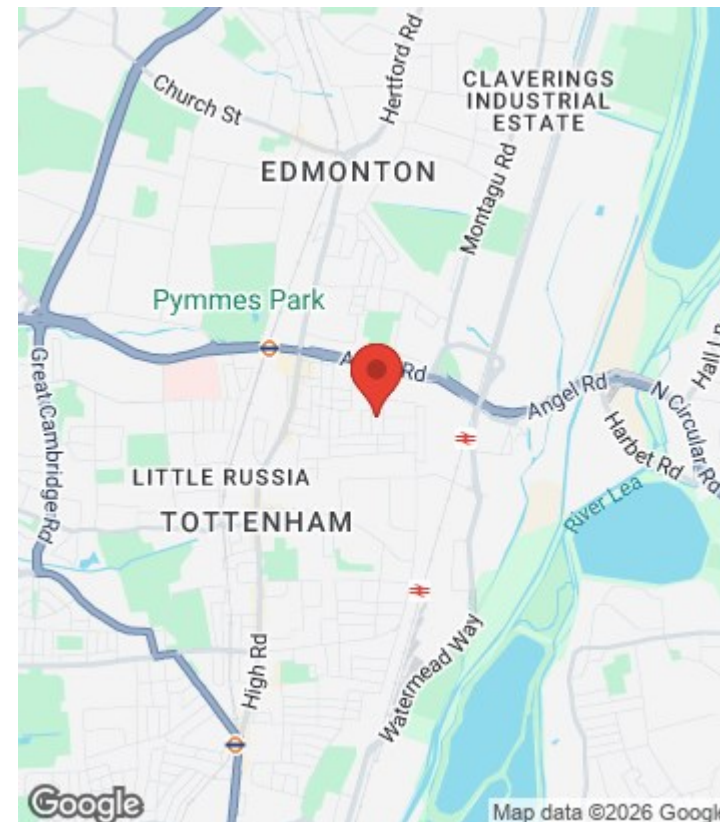
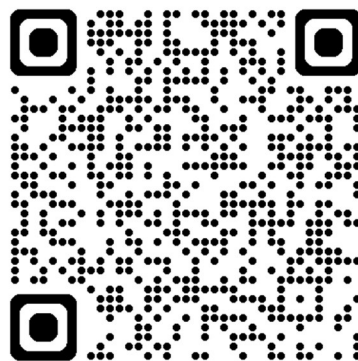




Thornaby Gardens, London, N18 Approximate Gross Internal Area = 663 sq ft / 61.6 sq m



For a guide to the area please scan this code for more information



House - End Terrace

Freehold

**Council:**

**Council Tax Band: C**

Agents Note: Whilst every care has been taken to prepare these particulars, they are for guidance purposes only. All measurements are approximate and are for general guidance purposes only and whilst every care has been taken to ensure their accuracy, they should not be relied upon and potential buyers/tenants are advised to recheck the measurements



**OFFICE ADDRESS**

438 Hertford Road  
Edmonton  
London  
N9 8AB

**OFFICE DETAILS**

020 8804 8123  
edmonton@castles.london  
<https://www.castles.london/>

