

Castles



ASKING PRICE

£350,000

Beatrice Road

London, N4 4PD

Castles

PROPERTY SUMMARY

Set within this period residence and occupying the lower ground floor is this well-presented, one bedroom conversion. Positioned on a residential turning within easy reach of the amenities of Stroud Green with its array of retailers and eateries.

Transport is provided by a number of local bus routes and nearby Finsbury Park over-ground and underground stations.

Further comprising separate kitchen, reception and L-shaped patio garden.

The property will be sold on a chain free basis.

Lease: 125 years from 25/03/1985 (New lease of 172 years on completion)

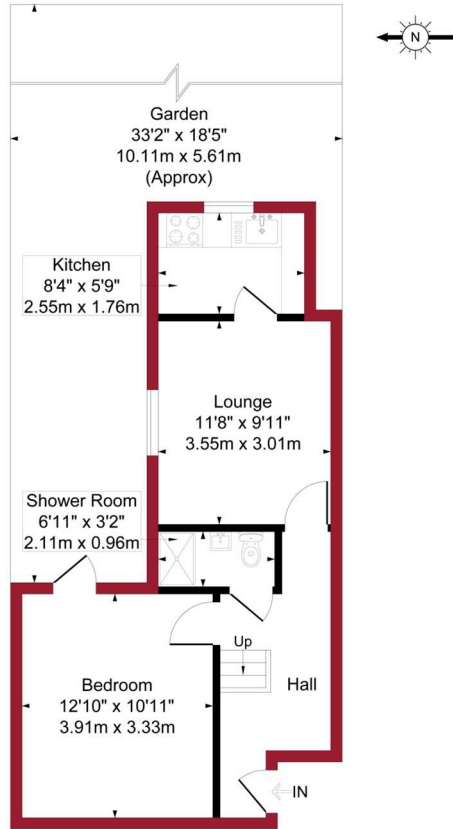
Current Service/Maintenance Charge:
Not applicable

Ground Rent: £100.00





Basement Flat, Rear Flat Beatrice Road, Stroud Green, N4 Approximate Gross Internal Area = 419 sq ft / 38.9 sq m

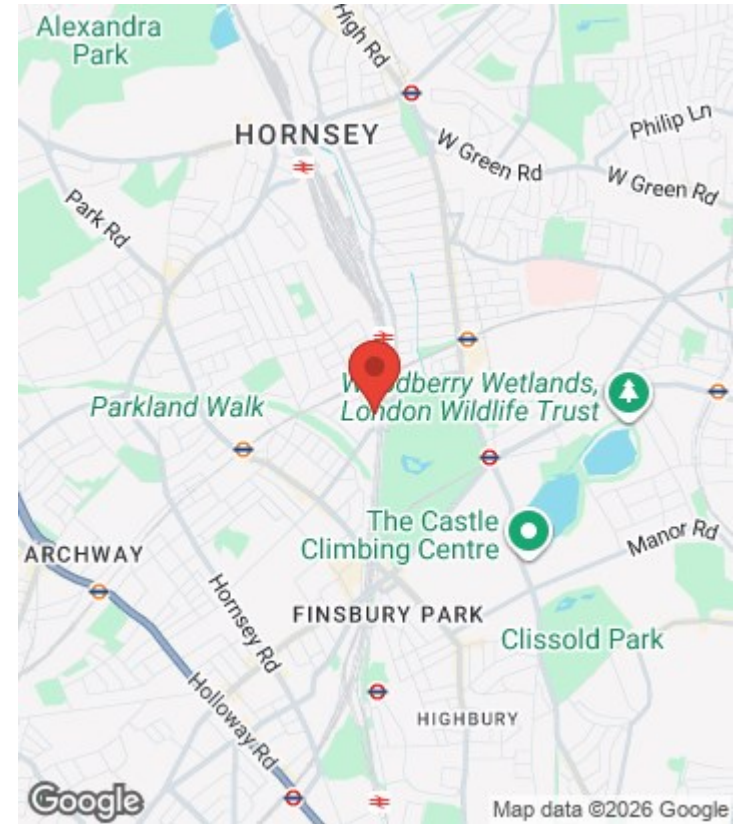
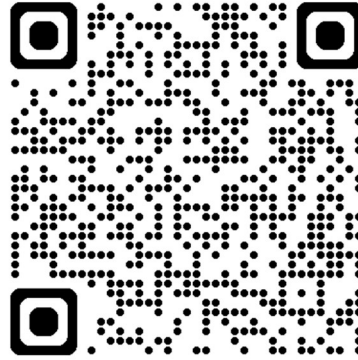


PINK PLAN

Floor plan produced in accordance with RICS Property Measurement 2nd Edition. Although Pink Plan Ltd ensures the highest level of accuracy, measurements of doors, windows and rooms are approximate and no responsibility is taken for error, omission or misstatement. These plans are for representation purposes only and no guarantee is given on the total square footage of the property within this plan. The figure icon is for initial guidance only and should not be relied on as a basis of valuation.



For a guide to the area please scan this code for more information



Flat

Leasehold

Council: Haringey

Council Tax Band: B

Agents Note: Whilst every care has been taken to prepare these particulars, they are for guidance purposes only. All measurements are approximate and are for general guidance purposes only and whilst every care has been taken to ensure their accuracy, they should not be relied upon and potential buyers/tenants are advised to recheck the measurements



OFFICE ADDRESS

12 Topsfield Parade
Crouch End
London
N8 8PR

OFFICE DETAILS

020 8348 5515
crouchend@castles.london
<https://www.castles.london>

