



Castles

OFFERS IN EXCESS OF
£210,000 Leasehold
Millstream Close
London, N13 6EF

PROPERTY SUMMARY

Welcome to this charming flat located in the desirable Millstream Close, London, N13. This delightful property offers a perfect blend of comfort and convenience, making it an ideal choice for individuals or couples seeking a cosy home in the heart of the city.

Upon entering, you will find a well-appointed reception room that provides a warm and inviting space for relaxation or entertaining guests. The room is filled with natural light, creating a bright and airy atmosphere. The flat features one spacious bedroom, which offers a peaceful retreat for restful nights. The layout is thoughtfully designed to maximise space and functionality.

The bathroom is modern and well-maintained, providing all the necessary amenities for your daily routine. The flat is situated in a friendly neighbourhood, with easy access to local shops, cafes, and parks, ensuring that you have everything you need within reach.

Millstream Close is well-connected to public transport, making it easy to explore all that London has to offer. Whether you are commuting to work or enjoying a day out in the city, you will appreciate the convenience of this location.

This flat is a wonderful opportunity for those looking to embrace city living while enjoying the comforts of home. Do not miss the chance to make this lovely property your own.

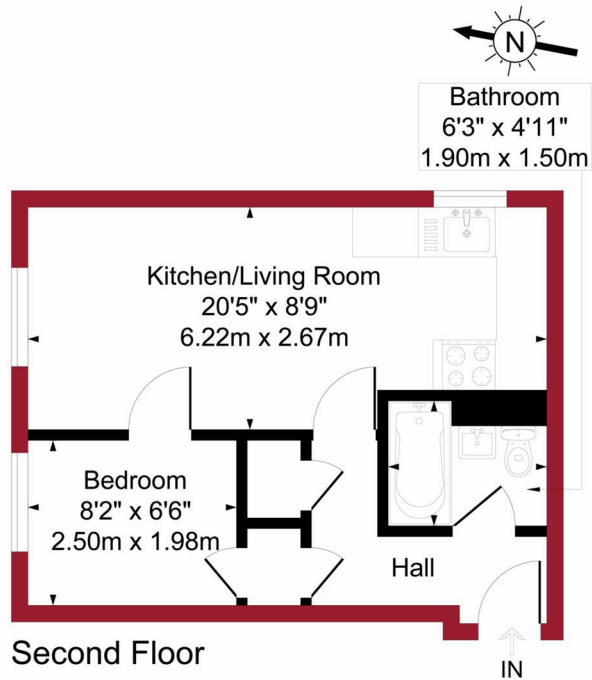




Millstream Close, London, N13

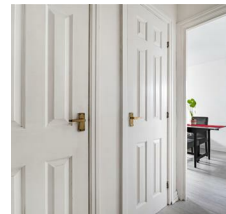
Approximate Gross Internal Area = 322 sq ft / 29.9 sq m

For a guide to the area please scan this code for more information



Flat
Leasehold

Council Tax Band: B
Lease Remaining: 91Years
Service Charge: £1,870.00 P/A
Ground Rent: £125.00 P/A



PINK PLAN

Floor plan produced in accordance with RICS Property Measurement 2nd Edition. Although Pink Plan Ltd ensures the highest level of accuracy, measurements of doors, windows and rooms are approximate and no responsibility is taken for error, omission or misstatement. These plans are for representation purposes only and no guarantee is given on the total square footage of the property within this plan. The figure icon is for initial guidance only and should not be relied on as a basis of valuation.

Castles

Agents Note: Whilst every care has been taken to prepare these particulars, they are for guidance purposes only. All measurements are approximate and are for general guidance purposes only and whilst every care has been taken to ensure their accuracy, they should not be relied upon and potential buyers/tenants are advised to recheck the measurements

Castles

OFFICE ADDRESS

78 Green Lanes
Palmers Green
London
N13 6BE

OFFICE DETAILS

020 8888 6081
www.castles.london

