

Castles



OFFERS IN EXCESS OF

£429,950

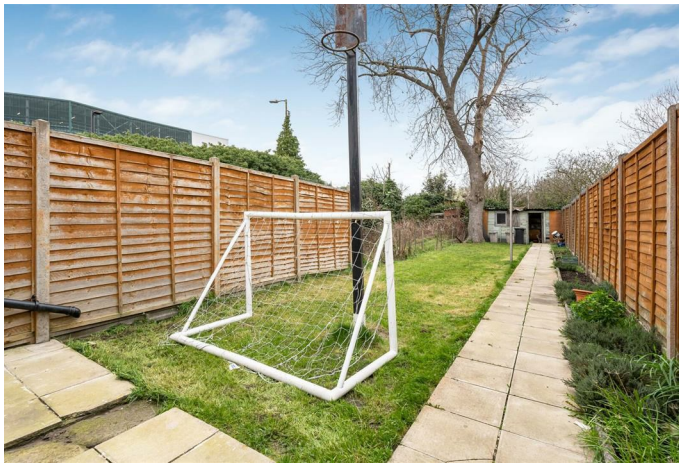
Somerset Road

London, N18 1HQ

PROPERTY SUMMARY

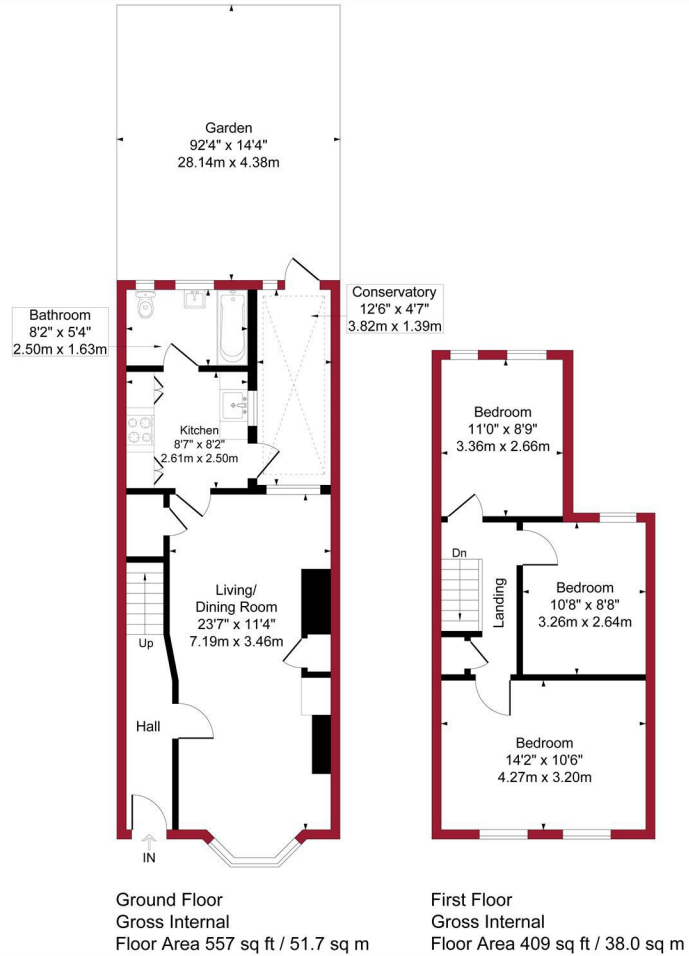
A three bedroom Victorian Terraced property situated within 1/4 mile of A406 Road links, Silver Street BR Station and North Middlesex Hospital. The property comprises of Reception, kitchen and bathroom to ground floor with a further three double bedrooms to first floor, it also has features to include, gas central heating, double glazing and 92ft rear garden.



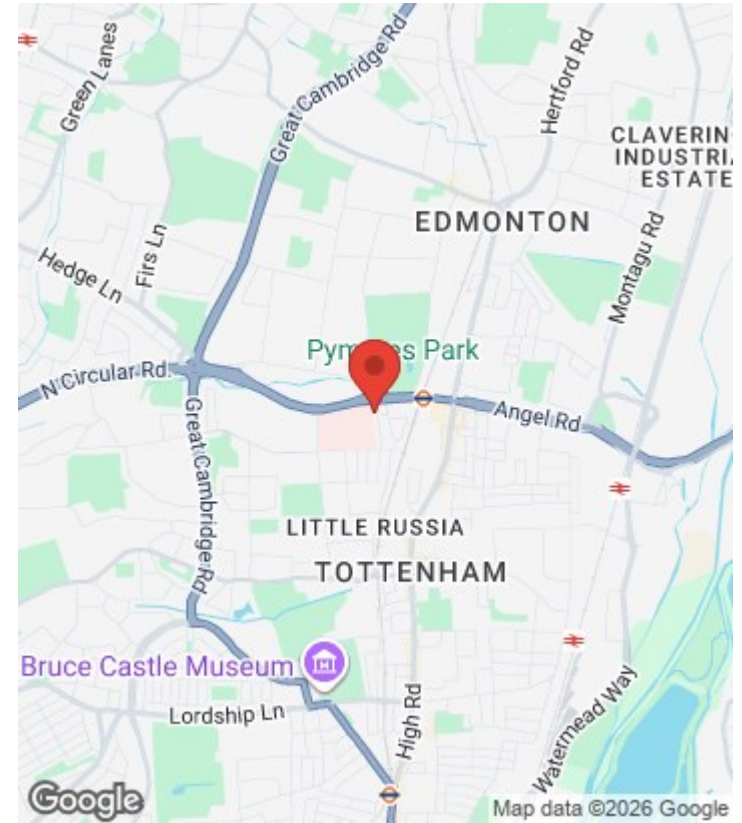
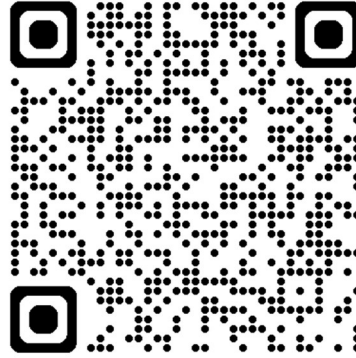


Somerset Road, London, N18

Approximate Gross Internal Area = 966 sq ft / 89.7 sq m



For a guide to the area please scan this code for more information



House - Terraced

Freehold

Council:

Council Tax Band: C

Agents Note: Whilst every care has been taken to prepare these particulars, they are for guidance purposes only. All measurements are approximate and are for general guidance purposes only and whilst every care has been taken to ensure their accuracy, they should not be relied upon and potential buyers/tenants are advised to recheck the measurements



OFFICE ADDRESS

438 Hertford Road
Edmonton
London
N9 8AB

OFFICE DETAILS

020 8804 8123
edmonton@castles.london
<https://www.castles.london/>

