



Castles

OFFERS IN EXCESS OF

£174,950

Streamside Close

London, N9 9XB

PROPERTY SUMMARY

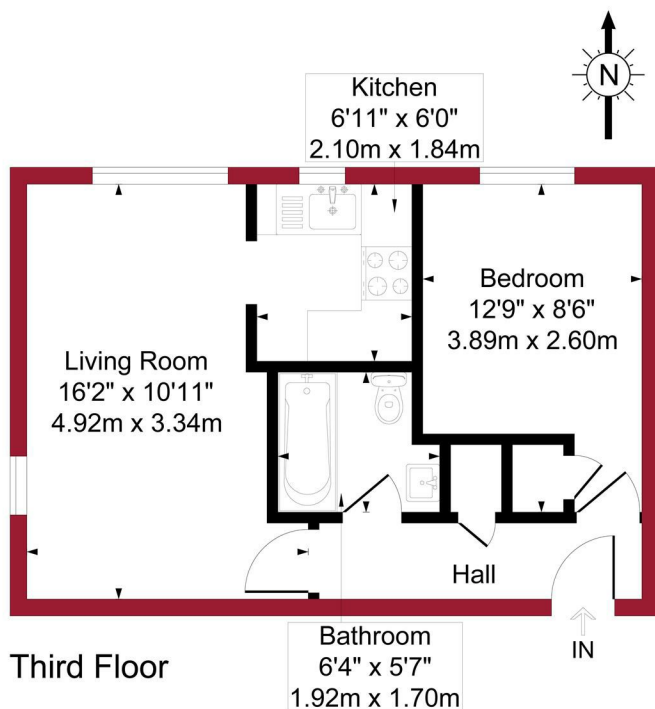
A one bedroom top floor purpose built flat situated on this development on the Latymer Estate N9. The property comprises of lounge, kitchen, bathroom and bedroom. It also has features to include, entry phone system, loft space and is offered for sale on a chain free basis.



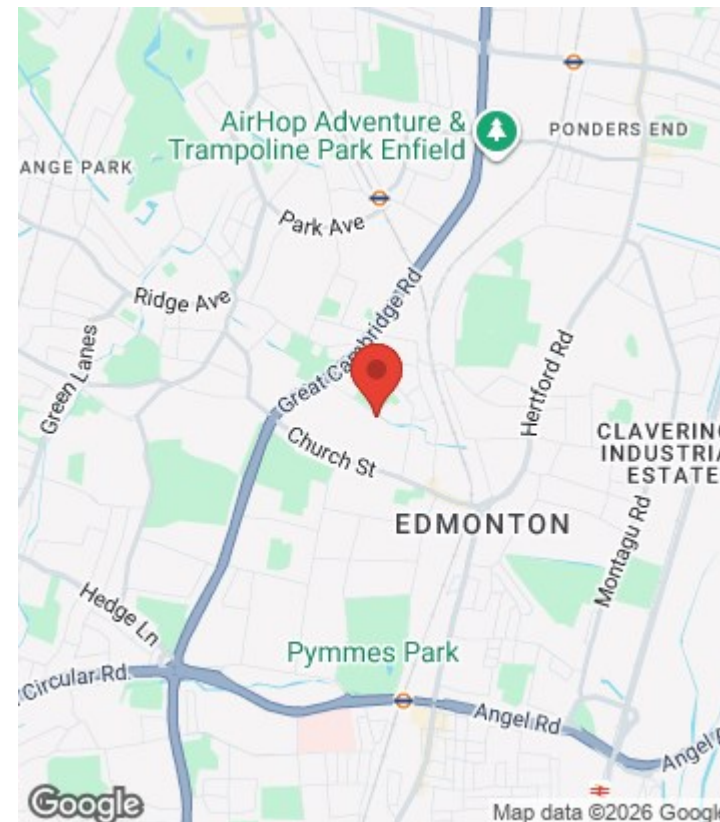
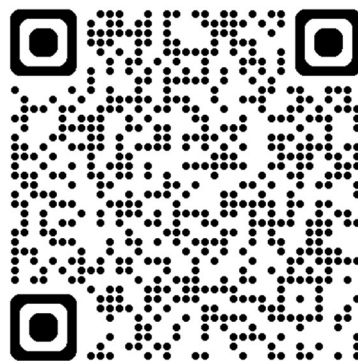


Streamside Close, London, N9

Approximate Gross Internal Area = 387 sq ft / 35.9 sq m



For a guide to the area please scan this code for more information



Flat
Leasehold
Council:
Council Tax Band: B

Agents Note: Whilst every care has been taken to prepare these particulars, they are for guidance purposes only. All measurements are approximate and are for general guidance purposes only and whilst every care has been taken to ensure their accuracy, they should not be relied upon and potential buyers/tenants are advised to recheck the measurements



OFFICE ADDRESS

438 Hertford Road
Edmonton
London
N9 8AB

OFFICE DETAILS

020 8804 8123
edmonton@castles.london
<https://www.castles.london/>

Energy Efficiency Rating		Current	Potential
Very energy efficient - lower running costs			
(92-100) A			
(81-91) B			
(69-80) C		69	75
(55-68) D			
(39-54) E			
(21-38) F			
(1-20) G			
Not energy efficient - higher running costs			
England & Wales		EU Directive 2002/91/EC	