

Castles

OFFERS IN EXCESS OF

£360,000

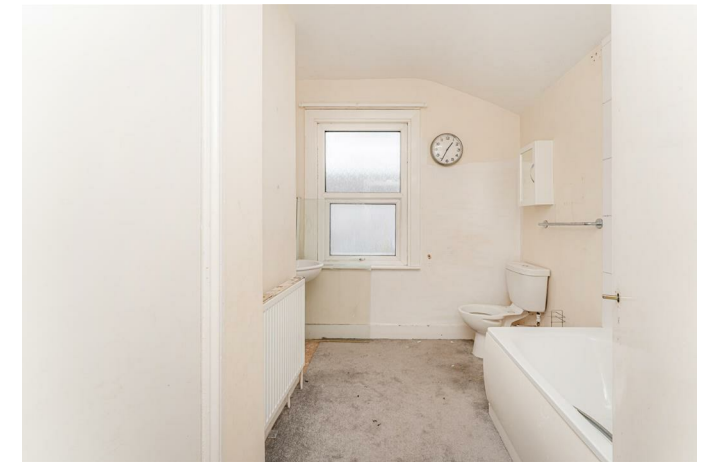
Kimberley Road

London, N18 2DP

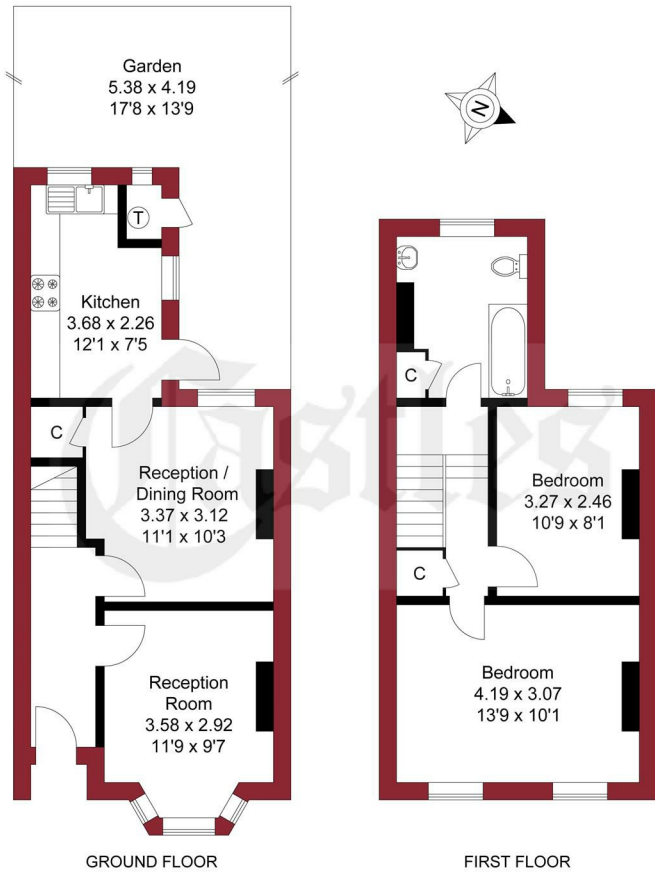
PROPERTY SUMMARY

A two bedroom Victorian Terraced property situated within 1/2 mile of Fore Street with it's shops and Transport links. The property does require some modernisation but has features to include, gas central heating, double glazing and is offered for sale on a chain free basis.



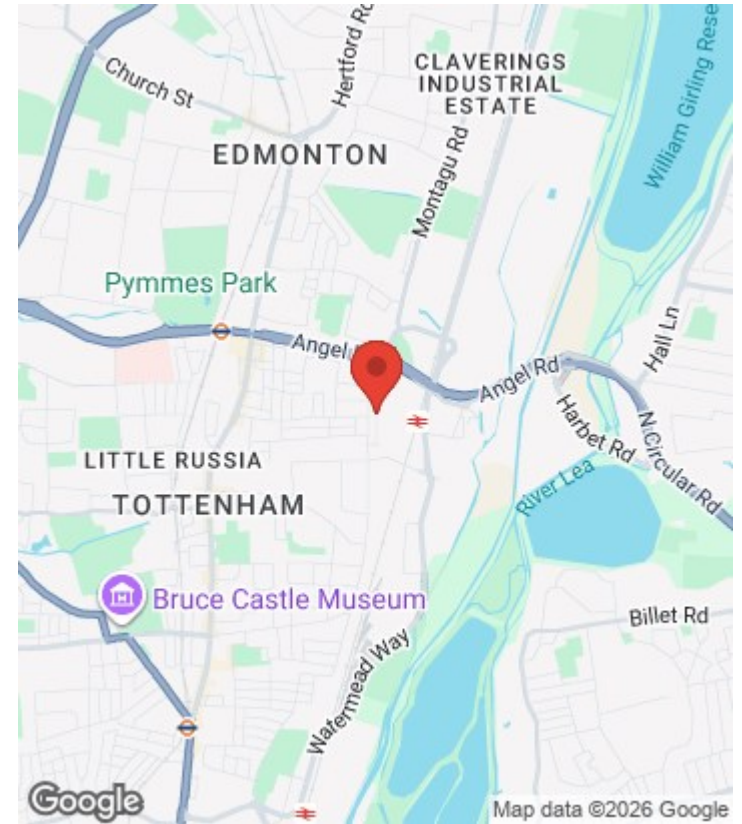
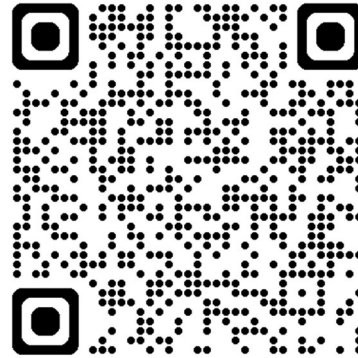


APPROXIMATE GROSS INTERNAL AREA
69.75 sqm / 750.78 sqft



THIS PLAN IS FOR ILLUSTRATION ONLY AND MAY NOT BE REPRESENTATIVE OF THE PROPERTY

For a guide to the area please scan this code for more information



House
Freehold
Council:
Council Tax Band: C

Agents Note: Whilst every care has been taken to prepare these particulars, they are for guidance purposes only. All measurements are approximate and are for general guidance purposes only and whilst every care has been taken to ensure their accuracy, they should not be relied upon and potential buyers/tenants are advised to recheck the measurements



OFFICE ADDRESS

438 Hertford Road
Edmonton
London
N9 8AB

OFFICE DETAILS

020 8804 8123
edmonton@castles.london
<https://www.castles.london/>

