

HARVEYFIELDS EN9

Castles market this three bedroom end of terrace home with a driveway and south facing rear garden. Comprising a lounge, kitchen/diner and an upstairs bathroom. Located close to town with its many amenities and is approx 1.5 miles to Waltham Cross' train station.

£360,000 Freehold

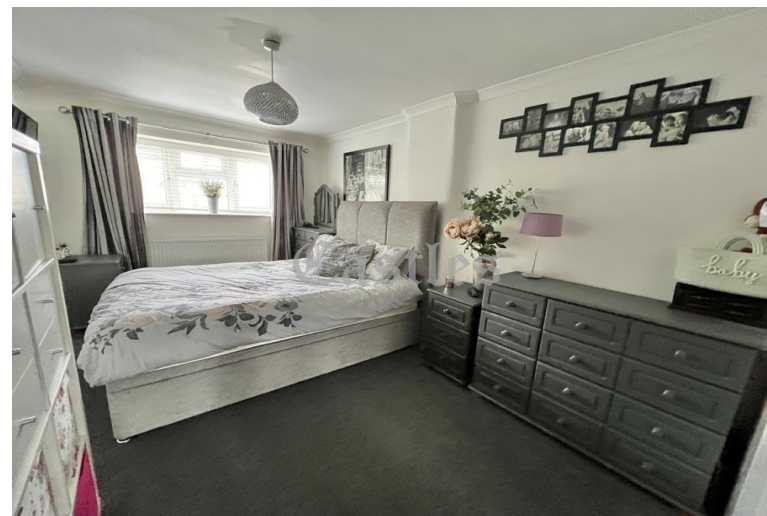
Castles

01992 711119

hello@castles.london

castles.london

2/4 Highbridge street
Waltham abbey
EN9 1DT



Entrance :

Driveway, side access, EV charger, front door to hall

Hallway :

Access to reception, stairs to first floor

Reception: 14' 7" x 11' 5" (4.44m x 3.48m):

Access to kitchen

Kitchen/Diner: 15' 0" x 9' 7" (4.57m x 2.92m):

Door to garden

First Floor Landing :

Access to bedrooms

Bedroom 1: 15' 9" x 9' 2" (4.80m x 2.79m):

(into alcove)

Bedroom 2: 8' 9" x 8' 7" (2.66m x 2.61m):

Loft hatch

Bedroom 3: 11' 9" x 6' 3" (3.58m x 1.90m)

narrowing to 9' 5" (2.87m)

Bathroom: 7' 4" x 6' 4" (2.23m x 1.93m)

Rear Garden:

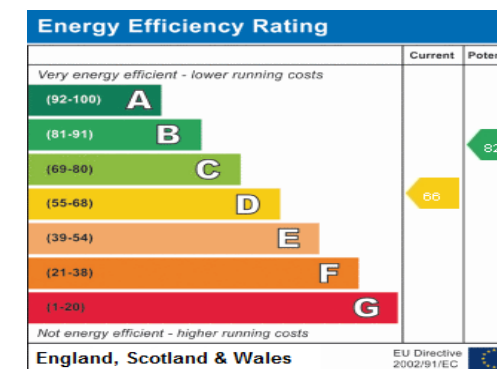
South facing, gate to rear access, out building, side access

Parking:

Driveway



A free, fair and independent service for buyers, sellers, tenants and landlords of property in the UK.



All details including floorplans are for representation purposes only and do not constitute a contract or warranty. Whilst every effort is made to ensure accuracy of descriptions and measurements, no responsibility is taken for errors, omissions and misstatements.