



Ruby Mews, Blue Bonnet Court, N13

Guide Price £385,000 - £400,000

Leasehold

Castles



Ruby Mews, Blue Bonnet Court, N13 4EN

Castles are pleased to offer for sale, this beautifully presented, modern, two double bedroom apartment in a great location. Spanning over 850sqft with a bright and airy open plan kitchen/living room, which has direct access to a spacious private balcony. The property is modern and stylish and also benefits from an en-suite to the master bedroom, a long lease of 119 years and comes with an allocated parking space. The block is very well maintained and comes with lift access to the apartment and has communal gardens with a playground. The property is very close to public transport, and local amenities and quick access to the North Circular road.

EPC Rating: B
Current: 84 Potential: 84

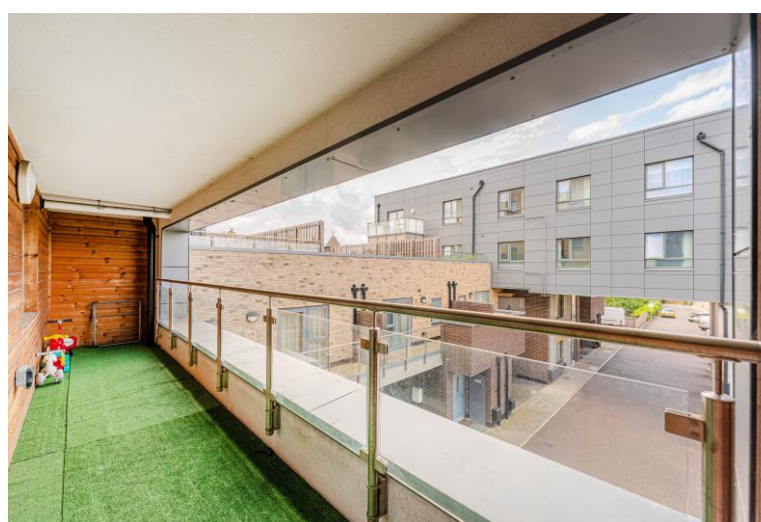
Council Tax Band D

Lease: 119 years
Service Charge: £2,712.84 P/A
Ground Rent: £300 P/A

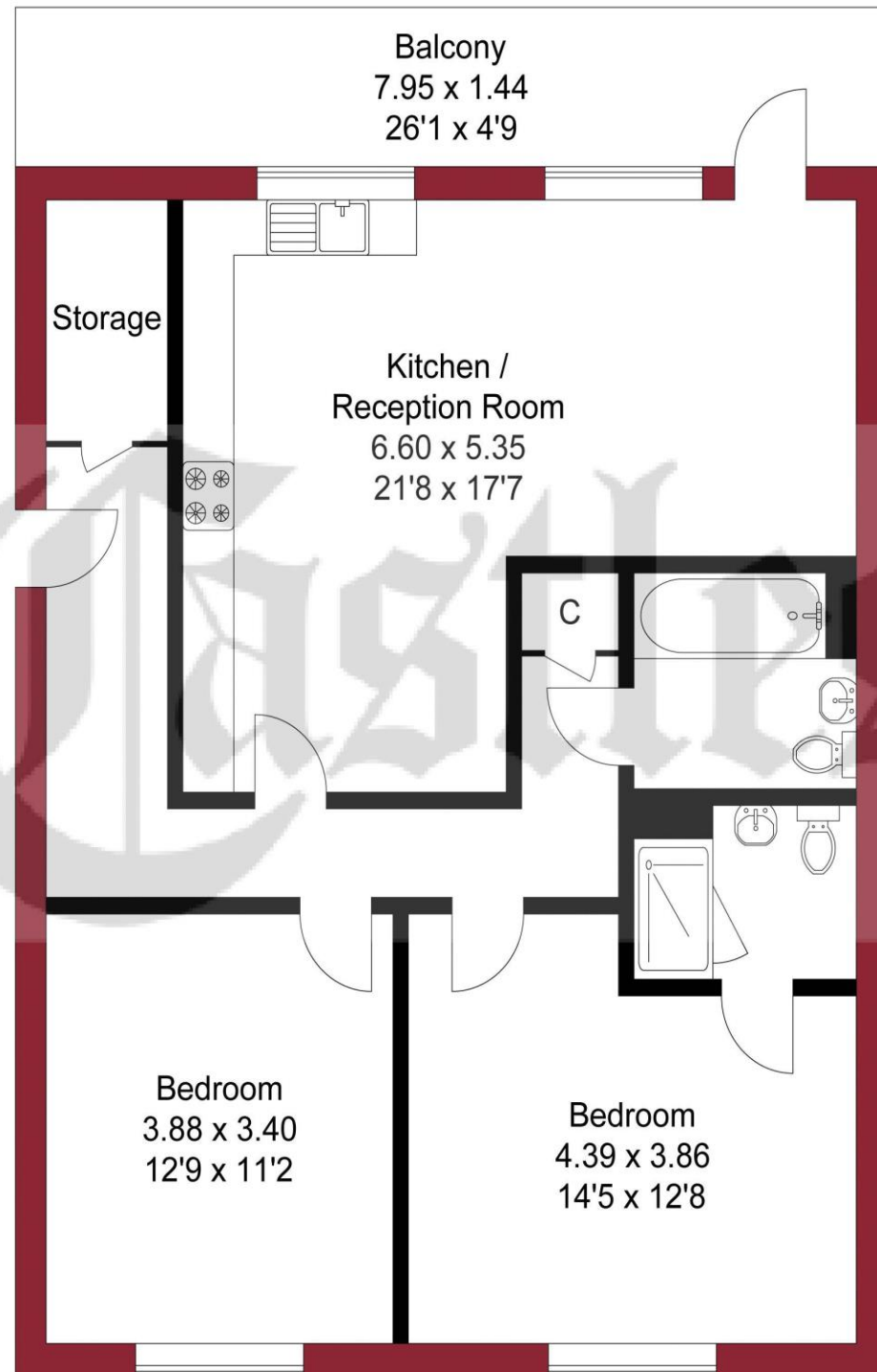
Guide Price £385,000-£400,000
Leasehold

Castles

020 8888 6081
crouchend@castles.london



APPROXIMATE GROSS INTERNAL AREA
82.02 sqm / 882.85 sqft



SECOND FLOOR

THIS PLAN IS FOR ILLUSTRATION ONLY AND MAY NOT BE REPRESENTATIVE OF THE PROPERTY

An overview of Palmers Green

Palmers Green is a small, vibrant town located on the outskirts of North London which has a diverse population and historic architecture. The main high street parade of shops, known as Palmers Green Shopping Centre, extends along the famous Green Lanes, with a diverse selection of shops, restaurants, independently-owned bars and cafes, beauty salons, sport facilities and recreational grounds. Many of the bars, restaurants and cafes overlook the beautiful open space of Broomfield Park.

History

The area of Palmers Green was once a minute hamlet in the parish of Edmonton, formed at the junction of Green Lanes and Fox Lane. Its population was very small, the village comprised no more than a few isolated houses in the mid-17th century. Local records mention a Palmers Field in 1204 and a Palmers Grove in 1340. Palmers Green is mentioned as a highway in 1324 (in Westminster Abbey Muniments).

By 1801 the area had grown to a village of 54 buildings, including two inns (according to the Middlesex Record Office). In 1871 the railway line from Wood Green to Enfield was opened and a station was built in Aldermans Hill to serve Palmers Green (half a mile away from the nearest houses).

The area remained largely undeveloped for thirty more years, as local landowners refused to sell their large estates for building. In 1902, however, large tracts of land were sold for building and the area began to develop rapidly. The first large-scale developments were on the old park estate between Fox Lane and Aldermans Hill, and the Hazelwood Park Estate between Hazelwood Lane and Hedge Lane. Within the latter development the building that now serves as Hazelwood Infant School and Hazelwood Junior School was built in Hazelwood Lane in 1908.

Notable local buildings include Broomfield House which unfortunately is in disrepair after a savage fire, and Truro House which is being redeveloped to its former glory. The library, formerly Southgate Town Hall, is intact and has recently been redeveloped. The former Pilgrims Rest (reflecting the name Palmers - "medieval pilgrim who carried a palm branch as a token of having visited the Holy Land") has already been demolished for housing. The Fox public house, which has been in its present guise since 1904, was once the site of the Electric Mouse comedy venue.

The poet and novelist Stevie Smith lived in Palmers Green from 1905 until her death in 1971. That same year Joe Strummer shared a flat at 18 Ash Grove with Tymon Dogg and several others. Paul Scott, the author of *The Jewel in the Crown*, was born in Palmers Green on 25 March 1920. Victoria Cross recipient Alfred Herring lived locally and has a local public house named after him. Paul Dean, a British/American Pulitzer Prize winner was raised and educated there between 1946 and 1957.

The Intimate Theatre was opened in a building that had been built in 1931 as St Monica's Church Hall. Among the actors who performed there were Richard Attenborough, Vivien Leigh, Roger Moore and (in a mime production) David Bowie. It is no longer a repertory theatre and the building is no longer used exclusively for theatrical performances, but it is still often referred to as the Intimate Theatre. In 1992 the building housed a Radio Cracker studio.

In 1988 Palmers Green's only hospital, Greentrees Hospital, was closed and demolished.

Housing Stock

With its vast array of both Edwardian and Victorian properties and the progressive emergence of modern high specification developments, Palmers Green attracts many different types of property buyers and tenants, from professionals and families to first-time buyers and students. It is also very popular with buy-to-let investors. Property prices and rents reflect the predominately affluent area.

Shopping, food and drink

Palmers Green offers an array of shops, services, restaurants, bars and cafes, with a perfect blend of old and new. Shops on Green Lanes include upmarket restaurants and supermarkets, such as the recently opened Waitrose, as well as numerous cafes/ coffee shops and bars spilling out onto the pavements. There is also a long-standing baker, Lefteris, as well as several butchers, a fishmonger

Energy Efficiency Rating

Score	Energy rating	Current	Potential
92+	A		
81-91	B	84 B	84 B
69-80	C		
55-68	D		
39-54	E		
21-38	F		
1-20	G		



78 Green Lanes, Palmers Green,
London, N13 6BE
020 8888 6081
palmersgreen@castles.london
www.castles.london

All details including floorplans are for representation purposes only and do not constitute a contract or warranty. Whilst every effort is made to ensure accuracy of descriptions and measurements, no responsibility is taken for errors, omissions and misstatements.

rightmove
find your happy

Zoopla
Smarter property search

PrimeLocation
Find the home you deserve

onTheMarket.com

The Property Ombudsman

A free, fair and independent service for buyers, sellers, tenants and landlords of property in the UK.

