



**Durants Road, EN3 7DG**

£530,000

Freehold

**Castles**



## Durants Road, EN3 7DG

A well presented 5 bedroom terraced house located off the Hertford Road within approx half a mile of Ponders End and Southbury Road British Rail stations and close to local shops, schools and bus routes in the Ponders End area. Features include: through lounge, upstairs bathroom and top floor shower room off street parking, loft conversion, gas central heating and rear garden with useful outbuilding. Viewing is recommended

EPC Rating: D  
Current: 67 Potential: 83

Council Tax Band: D

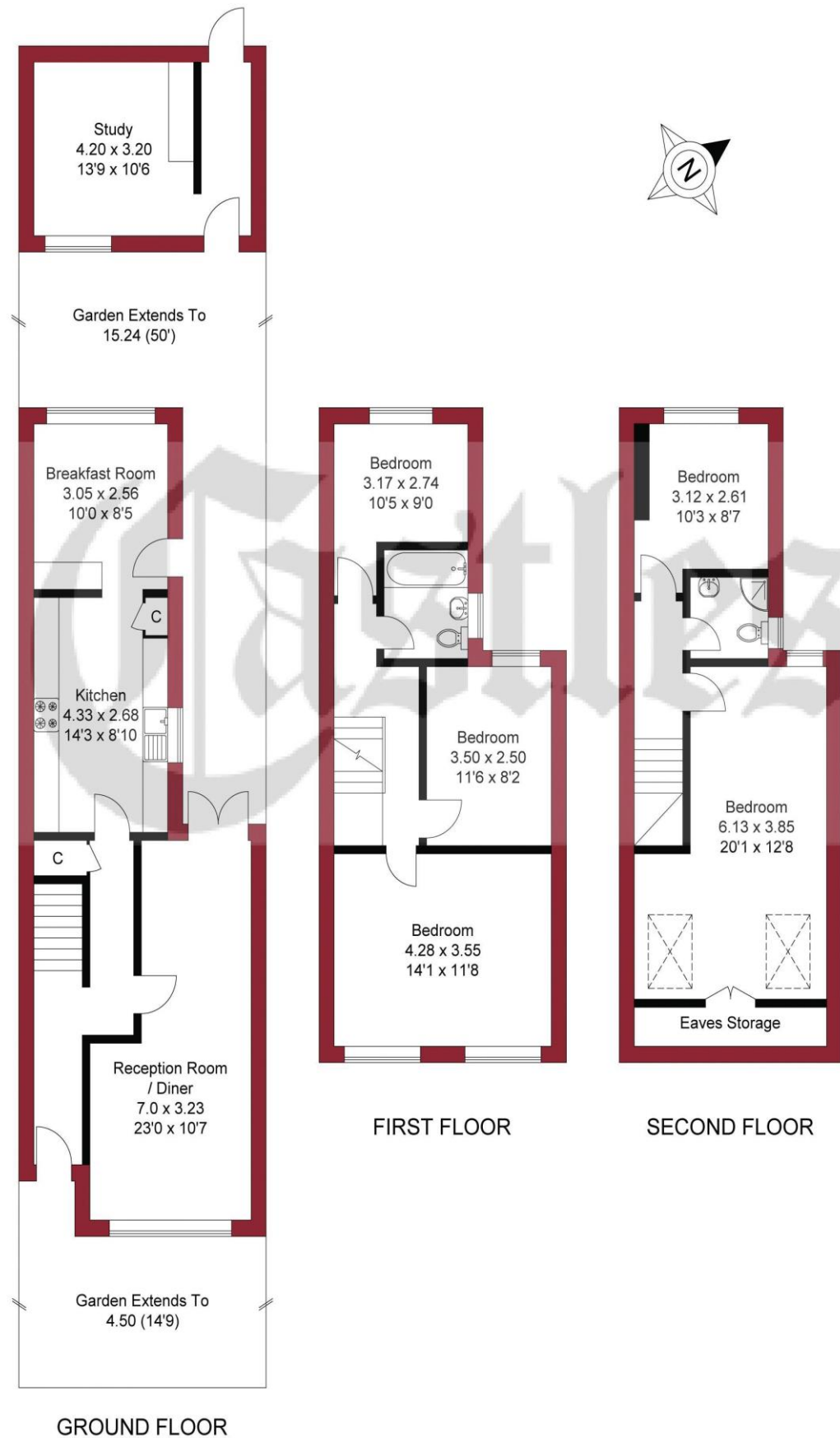
£530,000 Freehold

# Castles

020 8804 8000  
enfield@castles.london



APPROXIMATE GROSS INTERNAL AREA  
 127.93 sqm / 1377.02 sqft (Excluding Study / Eaves Storage)  
 141.85 sqm / 1526.86 sqft (Including Study)



THIS PLAN IS FOR ILLUSTRATION ONLY AND MAY NOT BE REPRESENTATIVE OF THE PROPERTY

### An overview of Enfield

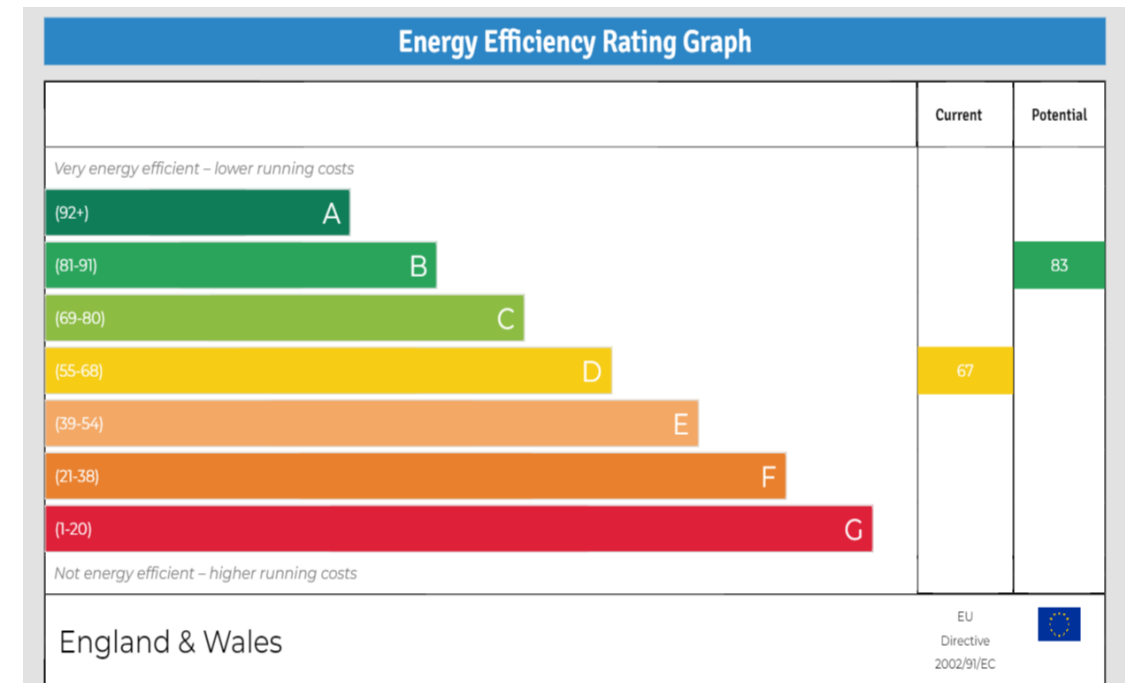
Enfield boasts a proud and distinguished history, home to several country houses and ancient monuments, the area also hosts a notable contingent of famous residents both past and present.

With affordable homes and a safe, green environment, Enfield attracts many buyers pleasantly surprised by the good value of property compared to some of the more pricey neighbouring boroughs.

On the lush, green perimeter of London, Enfield has excellent transport links with a quick and easy train journey into the City and West End.

There are a range of activities to keep residents busy in the borough with seven bustling shopping areas, 900 hectares of parks, three golf clubs, and numerous cinemas, theatres and museums. There is a diverse community residing in the area.

Notable for its range of great schools, vast green spaces and bustling retail centres, as well as good transport links to the rest of the city, Enfield is undoubtedly a thriving place to live and work and proves an excellent choice for first time buyers, families, young professionals and property investors alike."



243-245 Hertford Road  
 Enfield, EN3 5JJ  
 0208 804 8000  
 enfield@castles.london  
 www.castles.london

All details including floorplans are for representation purposes only and do not constitute a contract or warranty. Whilst every effort is made to ensure accuracy of descriptions and measurements, no responsibility is taken for errors, omissions and misstatements.

